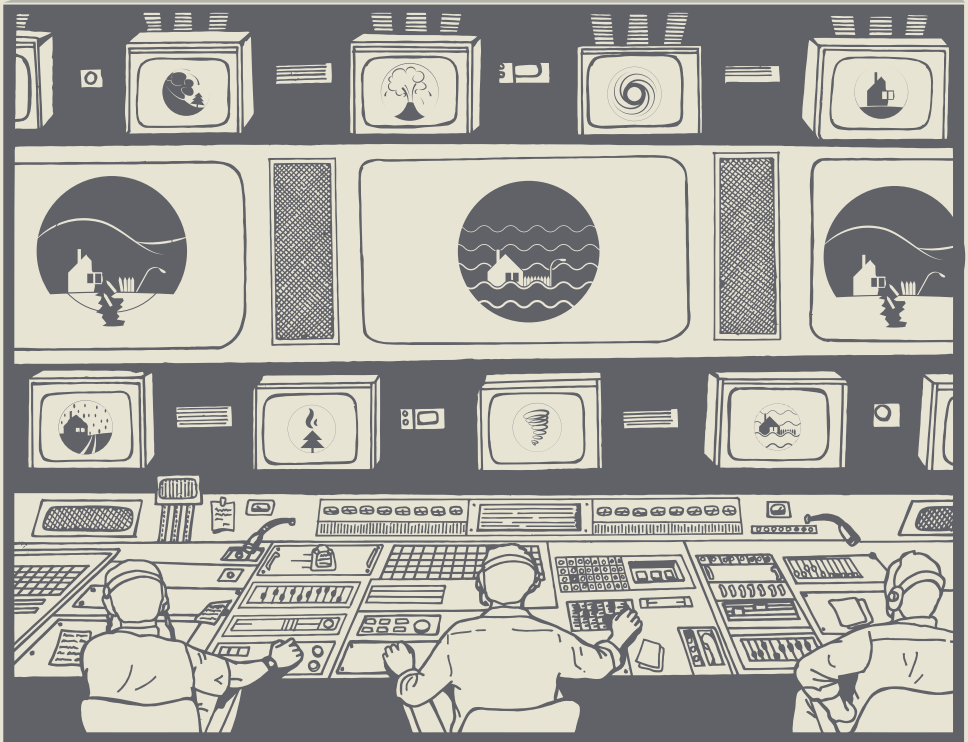


Disaster control & monitoring

Satellite Scan Solutions



Terras)S)S™



Information management is a crucial component of emergency response.

The ability of emergency officials to access information in an accurate and timely manner maximizes the success of the efforts.

Since most of the information used in disaster management has a geographic dimension, geo-technologies have a large capacity to contribute to emergency management.

The capabilities of geo-technologies to capture, store, analyse, and visualize spatial data in emergency management is great.





Remote Sensing and GIS is a very useful tool to complement conventional methods involved in Disaster Management Mitigation of natural disaster management can be successful only when detailed knowledge is obtained about the expected frequency, character, and magnitude of hazard events in an area. Although, natural disasters have shown in the last decades a drastic increase in magnitude and frequency, as observed there has been a dramatic improvement in technical capabilities to mitigate them.



With the interpretation of Remote Sensing data and integration of findings from different sources, it is possible to have preliminary information, such as devastation of primary logistics infrastructure (airports and roads, railroads), and effectively coordinate relief effort already in the early hours after a tragic disaster and save people's lives.

